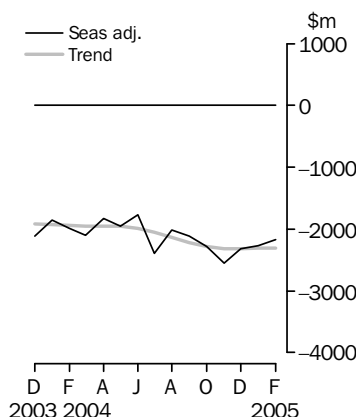


INTERNATIONAL TRADE IN GOODS AND SERVICES

AUSTRALIA

EMBARGO: 11.30AM (CANBERRA TIME) TUES 5 APR 2005

Balance on goods and services



KEY FIGURES

	December 2004 \$m	January 2005 \$m	February 2005 \$m	Jan 05 to Feb 05 % change
TREND				
Balance on goods & services	-2 320	-2 308	-2 307	..
Credits (exports of goods & services)	13 293	13 417	13 530	1
Debits (imports of goods & services)	15 613	15 725	15 837	1
SEASONALLY ADJUSTED				
Balance on goods & services	-2 314	-2 268	-2 178	..
Credits (exports of goods & services)	13 267	13 523	13 672	1
Debits (imports of goods & services)	15 581	15 791	15 850	—

.. not applicable

— nil or rounded to zero (including null cells)

KEY POINTS

TREND ESTIMATES

- The provisional trend estimate of the balance on goods and services was a deficit of \$2,307m in February 2005, a decrease of \$1m on the deficit in January.
- Goods and services credits rose \$113m (1%) to \$13,530m. Non-rural and other goods rose \$73m (1%), while rural goods fell \$10m. Services credits rose \$50m (2%).
- Goods and services debits rose \$112m (1%) to \$15,837m. Consumption goods rose \$61m (2%), capital goods rose \$2m, while intermediate and other goods fell \$3m. Services debits rose \$52m (2%).

SEASONALLY ADJUSTED ESTIMATES

- In seasonally adjusted terms, the balance on goods and services was a deficit of \$2,178m in February, a decrease of \$90m on the deficit in January.
- Goods and services credits rose \$149m (1%) to \$13,672m. Rural goods rose \$141m (7%), while non-rural and other goods fell \$59m (1%). Services credits rose \$67m (2%).
- Goods and services debits rose \$59m to \$15,850m. Capital goods rose \$168m (6%), while consumption goods fell \$81m (2%) and intermediate and other goods fell \$65m (1%). Services debits rose \$37m (1%).

ORIGINAL ESTIMATES

- In original terms, the February balance on goods and services was a deficit of \$497m, a decrease of \$1,412m on the deficit in January. Goods and services credits rose \$877m (7%) and goods and services debits fell \$535m (4%).
- In the eight months to February, exports of non-rural and other goods were up \$9.3b (17%) and rural goods were up \$2.2b (15%) on the corresponding period in 2003–04.

INQUIRIES

For further information about these and related statistics, contact the National Information and Referral Service on 1300 135 070 or Tom Jebbink on Canberra (02) 6252 5540.

NOTES

FORTHCOMING ISSUES

ISSUE	RELEASE DATE
March 2005	5 May 2005
April 2005	2 June 2005
May 2005	4 July 2005
June 2005	2 August 2005
July 2005	30 August 2005
August 2005	4 October 2005

.....

REVISIONS

January 2005 exports estimates have been revised after it was identified that incomplete exports data had been transferred to the ABS from the Australian Customs Service. Data for periods prior to January 2005 are not affected. These revisions were announced in a Corrigendum to the January 2005 issue of this publication that was issued on 1 April 2005.

Revisions were also made to incorporate the latest available data relating to merchandise trade and the quarterly Survey of International Trade in Services.

As a result of these revisions, total goods credits, in original terms, for January 2005 has been increased by \$371m. The deficit on the balance of goods and services for January 2005 has been revised down by \$440m.

AVAILABILITY OF DETAILED EXPORTS DATA

Due to the late detection of the problem with the exports data files, it is not feasible for the ABS to publish detailed trade exports data for January and February 2005 in Tables 8, 10 and 11 of this publication, or the associated AusStats Tables 13, 14 and 18. Detailed exports data for both January and February 2005 will be available with the March 2005 issue of this publication, scheduled for release on 5 May 2005.

While a delay to the release of detailed export data is regretted, the ABS priority is to ensure the continued availability of key macro-economic indicators.

.....

ABBREVIATIONS

\$b	billion (thousand million) dollars
\$m	million dollars
ABS	Australian Bureau of Statistics
APEC	Asia Pacific Economic Co-operation
ASEAN	Association of South-East Asian Nations
n.e.s.	not elsewhere specified
n.i.e.	not included elsewhere
OECD	Organisation for Economic Co-operation and Development
SAR	Special Administrative Region
SITC	Standard International Trade Classification

Dennis Trewin
Australian Statistician

CONTENTS

page

Tables on AusStats	4
--------------------	---

ANALYSIS

Analysis and comments	5
-----------------------	---

TABLES

INTERNATIONAL TRADE IN GOODS AND SERVICES – BALANCE OF PAYMENTS BASIS

1 Goods and services, summary, seasonally adjusted and trend estimates	10
2 Goods and services, summary, original	11
3 Goods credits, original	12
4 Goods debits, original	13
5 Services, summary, original	14
6 Services, summary, seasonally adjusted and trend estimates	15
7 Services, original, quarterly	16

INTERNATIONAL MERCHANDISE TRADE – RECORDED TRADE BASIS

8 International merchandise exports, by commodity	17
9 International merchandise imports, by commodity	20
10 International merchandise trade, by country and country groups	23
11 International merchandise trade, by state	24

OTHER TABLES

12 Period average exchange rates per Australian Dollar	25
---	----

OTHER INFORMATION

Explanatory Notes	26
Appendix – Related articles	29

TABLES ON AUSSTATS

TABLES AVAILABLE ON AUSSTATS

Data available on the ABS web site <<http://www.abs.gov.au>> include:

- longer time series of all tables contained in this publication
- additional tables listed below:

13 Merchandise exports by Broad Economic Category (BEC)

14 Merchandise exports by industry of origin (ANZSIC)

15 Merchandise imports by Broad Economic Category (BEC)

16 Merchandise imports by Balance of Payments Broad Economic Category (BoPBEC)

17 Merchandise imports by industry of origin (ANZSIC)

18 Merchandise exports, state by country and country groups

19 Merchandise imports, state by country and country groups

20 Monthly forward seasonal adjustment factors.

ANALYSIS AND COMMENTS

BALANCE ON GOODS AND SERVICES

The trend estimate of the balance on goods and services in February 2005 was a deficit of \$2,307m, virtually unchanged on the deficit in January.

In seasonally adjusted terms, the balance on goods and services in February 2005 was a deficit of \$2,178m, a decrease of \$90m on the deficit in January.

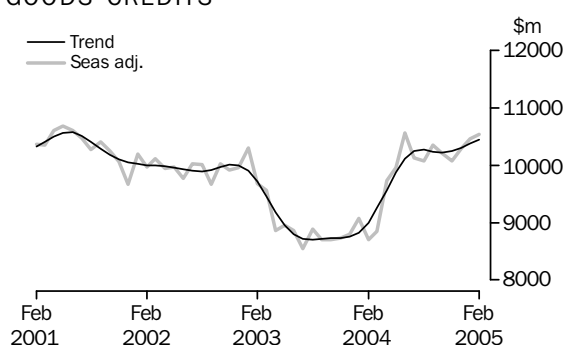
EXPORTS OF GOODS AND SERVICES

The trend estimate of goods and services credits rose \$113m (1%) between January and February to \$13,530m.

In seasonally adjusted terms, goods and services credits rose \$149m (1%) between January and February to \$13,672m. Rural goods rose \$141m (7%) and services credits rose \$67m (2%), while non-rural and other goods fell \$59m (1%).

Exports of goods

GOODS CREDITS



RURAL GOODS

The trend estimate of rural goods exports fell \$10m to \$2,042m.

In seasonally adjusted terms, exports of rural goods rose \$141m (7%) to \$2,149m.

In original terms, exports of rural goods rose \$374m (22%) to \$2,092m.

Movements in the original series contributing to the rise in seasonally adjusted terms were:

- Other rural, up \$115m (16%), in contrast to an average January to February fall of 2% over the previous three years
- Meat and meat preparations, up \$201m (56%), compared with an average January to February rise of 43% over the previous three years.

Contributing to the rise by about 9 percentage points was an adjustment made as part of the regular seasonal adjustment process to take into account different trading day patterns in January and February.

Partly offsetting these effects were cereal grains and cereal preparations, down \$14m (3%), compared with an average January to February fall of 2% over the previous three years.

ANALYSIS AND COMMENTS *continued*

Exports of goods *continued*

NON-RURAL AND OTHER GOODS

The trend estimate of non-rural and other goods exports rose \$73m (1%) to \$8,402m.

In seasonally adjusted terms, exports of non-rural and other goods fell \$59m (1%) to \$8,391m.

In original terms, exports of non-rural and other goods rose \$117m (2%) to \$7,629m.

Movements in the original series contributing to the fall in seasonally adjusted terms were:

- metal ores and minerals, down \$113m (8%), in contrast to an average January to February rise of 3% over the previous three years
- transport equipment, up \$132m (61%), compared with an average January to February rise of 71% over the previous three years
- metals (excluding gold), down \$73m (10%), compared with an average January to February fall of 7% over the previous three years.

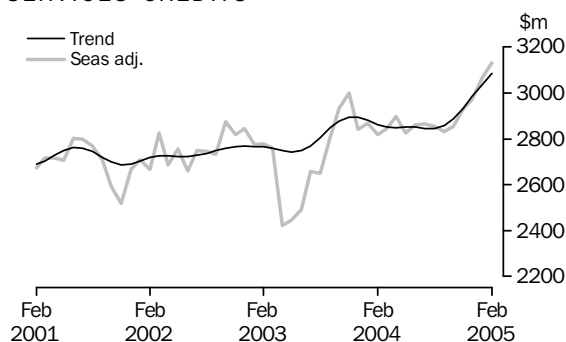
Partly offsetting these effects were:

- coal, coke and briquettes, down \$111m (8%), compared with an average January to February fall of 14% over the previous three years
- other manufactures, up \$260m (29%), compared with an average January to February rise of 23% over the previous three years.

Contributing to the offset by about 10 percentage points was an adjustment made as part of the regular seasonal adjustment process to take into account different trading day patterns in January and February.

Exports of Services

SERVICES CREDITS



In trend terms, services credits rose \$50m (2%) to \$3,086m.

Seasonally adjusted, services credits rose \$67m (2%) to \$3,132m.

Movements in the seasonally adjusted components contributing to this rise were:

- travel services, up \$44m (3%)
- other services, up \$13m (2%)
- passenger and other transportation services, up \$9m (1%).

Seasonally adjusted, tourism related services credits rose \$53m (3%) to \$1,982m.

ANALYSIS AND COMMENTS *continued*

IMPORTS OF GOODS AND SERVICES

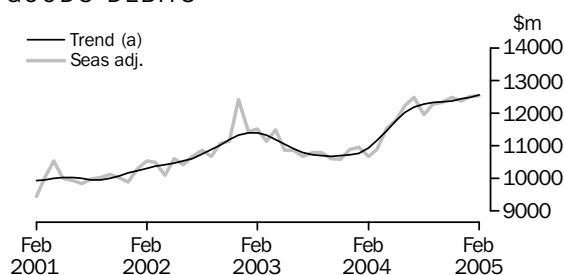
The trend estimate of goods and services debits rose \$112m (1%) between January and February to \$15,837m.

In seasonally adjusted terms, goods and services debits rose \$59m to \$15,850m.

Capital goods rose \$168m (6%) and services debits rose \$37m (1%), while consumption goods fell \$81m (2%) and intermediate and other goods fell \$65m (1%).

Imports of goods

GOODS DEBITS



(a) Trend estimates exclude abnormal imports of aircraft in December 2002.

CONSUMPTION GOODS

The trend estimate of imports of consumption goods rose \$61m (2%) to \$4,092m.

In seasonally adjusted terms, imports of consumption goods fell \$81m (2%) to \$4,105m.

In original terms, imports of consumption goods fell marginally to \$3,717m.

Movements in the original series contributing to the fall in seasonally adjusted terms were:

- non-industrial transport equipment, down \$162m (14%), in contrast to an average January to February rise of 7% over the previous three years
- food and beverages, down \$57m (12%), compared with an average January to February fall of 11% over the previous three years.

Partly offsetting these effects were:

- consumption goods n.e.s., up \$160m (15%), compared with an average January to February rise of 3% over the previous three years
- toys, books and leisure goods, up \$21m (9%), in contrast to an average January to February fall of 1% over the previous three years
- household electrical items, up \$39m (16%), compared with an average January to February rise of 10% over the previous three years.

Contributing to the offset by about 8 percentage points was an adjustment made as part of the regular seasonal adjustment process to take into account different trading day patterns in January and February.

CAPITAL GOODS

The trend estimate of imports of capital goods rose \$2m to \$2,890m.

In seasonally adjusted terms, imports of capital goods rose \$168m (6%) to \$2,952m.

In original terms, imports of capital goods rose \$17m (1%) to \$2,434m.

ANALYSIS AND COMMENTS *continued*

Imports of goods continued

CAPITAL GOODS *continued*

Movements in the original series contributing to the rise in seasonally adjusted terms were:

- machinery and industrial equipment, up \$12m (1%), in contrast to an average January to February fall of 17% over the previous three years
- capital goods n.e.s., up \$46m (15%), compared with an average January to February rise of 3% over the previous three years
- automatic data processing equipment, up \$10m (3%), in contrast to an average January to February fall of 1% over the previous three years.

Contributing to the rise by about 5 percentage points was an adjustment made as part of the regular seasonal adjustment process to take into account different trading day patterns in January and February.

Partly offsetting these effects were:

- industrial transport equipment n.e.s., down \$77m (19%), in contrast to an average January to February rise of 3% over the previous three years
- telecommunications equipment, up \$24m (8%), compared with an average January to February rise of 17% over the previous three years.

INTERMEDIATE AND OTHER GOODS

The trend estimate of imports of intermediate and other goods fell \$3m to \$5,573m.

In seasonally adjusted terms, intermediate and other goods imports fell \$65m (1%) to \$5,485m.

In original terms, imports of intermediate and other goods fell \$61m (1%) to \$5,083m.

Movements in the original series contributing to the fall in seasonally adjusted terms were:

- other merchandise goods, down \$6m (9%), in contrast to an average January to February rise of 62% over the previous three years
- other goods, down \$29m (8%), compared with an average January to February fall of 3% over the previous three years
- primary industrial supplies n.e.s., down \$13m (16%), compared with an average January to February fall of 7% over the previous three years.

Partly offsetting these effects were:

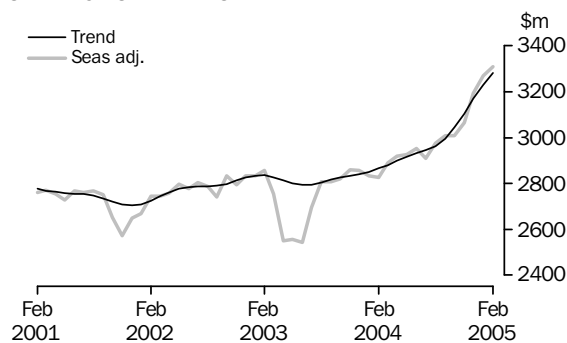
- organic and inorganic chemicals, up \$41m (14%), in contrast to an average January to February fall of 14% over the previous three years
- iron and steel, up \$19m (7%), in contrast to an average January to February fall of 17% over the previous three years
- other parts for capital goods, up \$24m (3%), in contrast to an average January to February fall of 6% over the previous three years.

Contributing to the offset by about 6 percentage points was an adjustment made as part of the regular seasonal adjustment process to take into account different trading day patterns in January and February.

ANALYSIS AND COMMENTS *continued*

Imports of Services

SERVICES DEBITS



In trend terms, services debits rose \$52m (2%) to \$3,282m.

Seasonally adjusted, services debits rose \$37m (1%) to \$3,308m.

Movements in the seasonally adjusted components contributing to this rise were:

- passenger and other transportation services, up \$49m (9%)
- travel services, up \$37m (3%).

Partly offsetting these effects were freight transportation services, down \$50m (7%)

Seasonally adjusted, tourism related services debits rose \$72m (4%) to \$1,760m.

GOODS AND SERVICES(a), Summary: **Seasonally Adjusted and Trend Estimates**

Months	BALANCE	CREDITS					DEBITS					
	On goods and services	Total goods and services	Total goods	Rural goods(b)	Non-rural and other goods(b)	Total services	Total goods and services	Total goods	Con- sumption goods	Capital goods	Inter- mediate and other goods	Total services
	\$m	\$m	\$m	\$m	\$m	\$m	\$m	\$m	\$m	\$m	\$m	\$m
SEASONALLY ADJUSTED												
2003												
December	-2 109	11 636	8 796	1 963	6 833	2 840	-13 745	-10 887	-3 531	-2 676	-4 680	-2 858
2004												
January	-1 855	11 947	9 079	2 142	6 937	2 868	-13 802	-10 969	-3 602	-2 708	-4 659	-2 833
February	-1 984	11 526	8 706	2 118	6 588	2 820	-13 510	-10 682	-3 406	-2 474	-4 802	-2 828
March	-2 093	11 697	8 851	1 982	6 869	2 846	-13 790	-10 900	-3 543	-2 592	-4 765	-2 890
April	-1 831	12 632	9 735	2 255	7 480	2 897	-14 463	-11 543	-3 807	-2 681	-5 055	-2 920
May	-1 946	12 779	9 954	2 440	7 514	2 825	-14 725	-11 798	-3 810	-2 820	-5 168	-2 927
June	-1 773	13 422	10 562	2 662	7 900	2 860	-15 195	-12 243	-3 951	-3 051	-5 241	-2 952
July	-2 398	12 995	10 132	2 431	7 701	2 863	-15 393	-12 485	-3 850	-3 183	-5 452	-2 908
August	-2 015	12 928	10 075	2 332	7 743	2 853	-14 943	-11 967	-3 758	-2 888	-5 321	-2 976
September	-2 109	13 190	10 357	2 283	8 074	2 833	-15 299	-12 291	-3 865	-2 861	-5 565	-3 008
October	-2 279	13 061	10 208	2 142	8 066	2 853	-15 340	-12 331	-3 814	-3 071	-5 446	-3 009
November	-2 547	13 003	10 072	2 095	7 977	2 931	-15 550	-12 486	-3 876	-2 937	-5 673	-3 064
December	-2 314	13 267	10 294	2 041	8 253	2 973	-15 581	-12 388	-3 874	-2 895	-5 619	-3 193
2005												
January	-2 268	13 523	10 458	2 008	8 450	3 065	-15 791	-12 520	-4 186	-2 784	-5 550	-3 271
February	-2 178	13 672	10 540	2 149	8 391	3 132	-15 850	-12 542	-4 105	-2 952	-5 485	-3 308
TREND ESTIMATES												
2003												
December	-1 915	11 645	8 752	1 956	6 796	2 893	-13 560	-10 719	-3 497	-2 588	-4 634	-2 841
2004												
January	-1 929	11 705	8 825	2 018	6 807	2 880	-13 634	-10 783	-3 516	-2 589	-4 678	-2 851
February	-1 942	11 857	8 995	2 097	6 898	2 862	-13 799	-10 934	-3 562	-2 609	-4 763	-2 865
March	-1 948	12 108	9 257	2 195	7 062	2 851	-14 056	-11 175	-3 634	-2 663	-4 878	-2 881
April	-1 951	12 417	9 568	2 301	7 267	2 849	-14 368	-11 469	-3 717	-2 744	-5 008	-2 899
May	-1 957	12 726	9 874	2 391	7 483	2 852	-14 683	-11 766	-3 790	-2 840	-5 136	-2 917
June	-1 991	12 966	10 115	2 443	7 672	2 851	-14 957	-12 024	-3 839	-2 932	-5 253	-2 933
July	-2 054	13 093	10 247	2 442	7 805	2 846	-15 147	-12 202	-3 853	-2 995	-5 354	-2 945
August	-2 140	13 116	10 271	2 381	7 890	2 845	-15 256	-12 293	-3 843	-3 013	-5 437	-2 963
September	-2 225	13 091	10 234	2 280	7 954	2 857	-15 316	-12 321	-3 834	-2 990	-5 497	-2 995
October	-2 283	13 106	10 218	2 182	8 036	2 888	-15 389	-12 345	-3 854	-2 953	-5 538	-3 044
November	-2 314	13 181	10 249	2 115	8 134	2 932	-15 495	-12 390	-3 903	-2 923	-5 564	-3 105
December	-2 320	13 293	10 308	2 074	8 234	2 985	-15 613	-12 444	-3 965	-2 903	-5 576	-3 169
2005												
January	-2 308	13 417	10 381	2 052	8 329	3 036	-15 725	-12 495	-4 031	-2 888	-5 576	-3 230
February	-2 307	13 530	10 444	2 042	8 402	3 086	-15 837	-12 555	-4 092	-2 890	-5 573	-3 282

(a) For sign conventions, see paragraph 9 of the Explanatory Notes.

(b) For all time periods, estimates for sugar, sugar preparations and honey are included in Non-rural and other goods.

GOODS AND SERVICES(a), Summary: **Original**

	BALANCE	CREDITS					DEBITS					
	<i>On goods and services</i>	<i>Total goods and services</i>	<i>Total goods</i>	<i>Rural goods(b)</i>	<i>Non-rural and other goods(b)</i>	<i>Total services</i>	<i>Total goods and services</i>	<i>Total goods</i>	<i>Con- sumption goods</i>	<i>Capital goods</i>	<i>Inter- mediate and other goods</i>	<i>Total services</i>
	\$m	\$m	\$m	\$m	\$m	\$m	\$m	\$m	\$m	\$m	\$m	\$m
FINANCIAL YEAR												
2001-02	-1 373	153 200	120 950	30 085	90 865	32 250	-154 573	-121 942	-37 422	-27 208	-57 312	-32 631
2002-03	-18 876	148 293	115 800	25 484	90 316	32 493	-167 169	-134 278	-41 228	-31 554	-61 496	-32 891
2003-04	-23 777	143 484	109 504	24 560	84 944	33 980	-167 261	-133 026	-42 916	-32 118	-57 992	-34 235
MONTHS												
2003												
December	-1 922	12 085	9 293	2 097	7 196	2 792	-14 007	-11 147	-3 517	-2 840	-4 790	-2 860
2004												
January	-1 774	11 245	7 967	1 868	6 099	3 278	-13 019	-10 102	-3 223	-2 404	-4 475	-2 917
February	-185	11 947	8 314	2 090	6 224	3 633	-12 132	-9 589	-3 092	-2 041	-4 456	-2 543
March	-2 278	12 014	9 236	2 139	7 097	2 778	-14 292	-11 529	-3 684	-2 681	-5 164	-2 763
April	-1 732	12 116	9 401	2 202	7 199	2 715	-13 848	-10 986	-3 486	-2 484	-5 016	-2 862
May	-1 392	12 585	10 149	2 519	7 630	2 436	-13 977	-11 166	-3 459	-2 704	-5 003	-2 811
June	-2 534	13 164	10 582	2 607	7 975	2 582	-15 698	-12 728	-3 791	-3 661	-5 276	-2 970
July	-1 978	13 544	10 129	2 379	7 750	3 415	-15 522	-12 462	-3 991	-3 237	-5 234	-3 060
August	-2 271	13 084	10 413	2 300	8 113	2 671	-15 355	-12 345	-3 940	-2 949	-5 456	-3 010
September	-3 362	13 027	10 568	2 291	8 277	2 459	-16 389	-13 123	-4 369	-3 024	-5 730	-3 266
October	-2 535	13 567	10 778	2 249	8 529	2 789	-16 102	-12 913	-4 190	-3 082	-5 641	-3 189
November	-3 391	12 907	10 097	2 122	7 975	2 810	-16 298	-13 291	-4 277	-3 134	-5 880	-3 007
December	-2 030	13 662	10 731	2 154	8 577	2 931	-15 692	-12 511	-3 803	-3 011	-5 697	-3 181
2005												
January	-1 909	12 732	9 230	1 718	7 512	3 502	-14 641	-11 279	-3 718	-2 417	-5 144	-3 362
February	-497	13 609	9 721	2 092	7 629	3 888	-14 106	-11 234	-3 717	-2 434	-5 083	-2 872
FINANCIAL YEAR TO DATE												
8 months ended February												
2004	-15 841	93 605	70 136	15 093	55 043	23 469	-109 446	-86 617	-28 496	-20 588	-37 533	-22 829
2005	-17 973	106 132	81 667	17 305	64 362	24 465	-124 105	-99 158	-32 005	-23 288	-43 865	-24 947

(a) For sign conventions, see paragraph 9 of the Explanatory Notes.

(b) For all time periods, estimates for sugar, sugar preparations and honey are included in Non-rural and other goods.

							8 MONTHS ENDED FEBRUARY		Change
	2001-02	2002-03	2003-04	Dec 2004	Jan 2005	Feb 2005	2004	2005	
	\$m	\$m	\$m	\$m	\$m	\$m	\$m	\$m	%
Total goods credits	120 950	115 800	109 504	10 731	9 230	9 721	70 136	81 667	16.4
Rural goods									
Meat and meat preparations	6 246	5 655	5 758	592	360	561	3 537	4 432	25.3
Cereal grains and cereal preparations	6 481	4 487	5 094	385	496	482	2 878	3 850	33.8
Wool and sheepskins	3 687	3 545	2 778	267	139	211	1 712	1 823	6.5
Other rural	13 671	11 797	10 930	910	723	838	6 966	7 200	3.4
<i>Total rural goods(a)</i>	<i>30 085</i>	<i>25 484</i>	<i>24 560</i>	<i>2 154</i>	<i>1 718</i>	<i>2 092</i>	<i>15 093</i>	<i>17 305</i>	<i>14.7</i>
Non-rural goods									
Metal ores and minerals	14 774	14 523	14 888	1 612	1 449	1 336	9 339	11 831	26.7
Coal, coke and briquettes	13 430	11 987	11 001	1 304	1 345	1 234	6 726	10 172	51.2
Other mineral fuels	10 940	11 049	8 766	822	889	842	6 051	7 228	19.5
Metals (excl. gold)	9 650	8 711	7 759	693	753	680	4 780	5 702	19.3
Machinery	7 999	7 362	6 839	742	446	584	4 478	4 928	10.0
Transport equipment	5 686	6 273	5 155	477	217	349	3 470	3 052	-12.0
Other manufactures	13 758	13 485	13 276	1 242	905	1 165	8 674	9 225	6.4
Other non-rural(a)	7 009	8 234	9 286	935	795	840	5 953	7 030	18.1
<i>Total non-rural goods(a)</i>	<i>83 246</i>	<i>81 624</i>	<i>76 970</i>	<i>7 827</i>	<i>6 799</i>	<i>7 030</i>	<i>49 471</i>	<i>59 168</i>	<i>19.6</i>
Other goods									
<i>Total other goods(b)</i>	<i>7 619</i>	<i>8 692</i>	<i>7 974</i>	<i>750</i>	<i>713</i>	<i>599</i>	<i>5 572</i>	<i>5 194</i>	<i>-6.8</i>

(a) For all time periods, estimates for sugar, sugar preparations and honey are included in Other non-rural.

(b) Includes non-monetary gold.

GOODS DEBITS(a): Original

							8 MONTHS ENDED FEBRUARY		Change
	2001-02	2002-03	2003-04	Dec 2004	Jan 2005	Feb 2005	2004	2005	
	\$m	\$m	\$m	\$m	\$m	\$m	\$m	\$m	%
Total goods debits	-121 942	-134 278	-133 026	-12 511	-11 279	-11 234	-86 617	-99 158	14.5
Consumption goods									
Food and beverages, mainly for consumption	-4 687	-5 067	-5 167	-530	-479	-422	-3 466	-3 908	12.8
Household electrical items	-3 166	-3 657	-3 793	-353	-244	-283	-2 544	-2 871	12.9
Non-industrial transport equipment	-9 930	-11 302	-12 326	-1 104	-1 151	-989	-8 017	-8 412	4.9
Textiles, clothing and footwear	-4 849	-5 237	-5 078	-363	-574	-572	-3 404	-4 099	20.4
Toys, books and leisure goods	-3 494	-3 740	-3 593	-278	-231	-252	-2 484	-2 627	5.8
Consumption goods n.e.s.	-11 296	-12 225	-12 959	-1 175	-1 039	-1 199	-8 581	-10 088	17.6
<i>Total consumption goods</i>	<i>-37 422</i>	<i>-41 228</i>	<i>-42 916</i>	<i>-3 803</i>	<i>-3 718</i>	<i>-3 717</i>	<i>-28 496</i>	<i>-32 005</i>	<i>12.3</i>
Capital goods									
Machinery and industrial equipment	-9 502	-11 007	-11 064	-1 250	-1 029	-1 041	-7 303	-9 044	23.8
ADP equipment	-5 055	-4 908	-5 138	-474	-369	-379	-3 086	-3 540	14.7
Telecommunications equipment	-3 643	-3 619	-4 105	-392	-293	-317	-2 483	-3 093	24.6
Civil aircraft	-1 513	-3 887	-3 061	-132	-1	-3	-2 160	-1 268	-41.3
Industrial transport equipment n.e.s.	-3 613	-3 881	-4 144	-376	-408	-331	-2 551	-3 221	26.3
Capital goods n.e.s.	-3 882	-4 252	-4 606	-387	-317	-363	-3 005	-3 122	3.9
<i>Total capital goods</i>	<i>-27 208</i>	<i>-31 554</i>	<i>-32 118</i>	<i>-3 011</i>	<i>-2 417</i>	<i>-2 434</i>	<i>-20 588</i>	<i>-23 288</i>	<i>13.1</i>
Intermediate and other merchandise goods									
Food and beverages, mainly for industry	-577	-736	-625	-51	-59	-51	-417	-435	4.3
Primary industrial supplies n.e.s.	-1 117	-1 220	-1 079	-98	-83	-70	-721	-682	-5.4
Fuels and lubricants	-8 823	-10 393	-9 917	-1 331	-960	-965	-6 002	-9 086	51.4
Parts for transport equipment	-6 827	-7 258	-6 548	-544	-555	-526	-4 363	-4 551	4.3
Parts for ADP equipment	-2 159	-2 011	-1 812	-151	-125	-120	-1 178	-1 166	-1.0
Other parts for capital goods	-8 216	-8 605	-8 553	-796	-698	-722	-5 563	-6 326	13.7
Organic and inorganic chemicals	-3 447	-3 089	-3 048	-312	-292	-333	-1 936	-2 326	20.1
Paper and paperboard	-2 225	-2 326	-2 242	-185	-187	-178	-1 516	-1 579	4.2
Textile yarn and fabrics	-1 830	-1 839	-1 576	-105	-114	-108	-1 057	-1 009	-4.5
Iron and steel	-1 765	-1 960	-2 026	-235	-267	-286	-1 312	-1 832	39.6
Plastics	-2 182	-2 478	-2 177	-209	-213	-201	-1 431	-1 645	15.0
Processed industrial supplies n.e.s.	-11 441	-12 238	-12 029	-1 175	-1 149	-1 116	-7 713	-9 215	19.5
Other merchandise goods	-1 563	-1 710	-1 234	-70	-70	-64	-899	-668	-25.7
<i>Total intermediate and other merchandise goods</i>	<i>-52 172</i>	<i>-55 863</i>	<i>-52 866</i>	<i>-5 262</i>	<i>-4 772</i>	<i>-4 740</i>	<i>-34 108</i>	<i>-40 520</i>	<i>18.8</i>
Other goods									
<i>Total other goods(b)</i>	<i>-5 140</i>	<i>-5 633</i>	<i>-5 126</i>	<i>-435</i>	<i>-372</i>	<i>-343</i>	<i>-3 425</i>	<i>-3 345</i>	<i>-2.3</i>

(a) For sign conventions, see paragraph 9 of the Explanatory Notes.

(b) Includes non-monetary gold.

SERVICES (a)(b), Summary: **Original**

							8 MONTHS ENDED FEBRUARY		Change
	2001-02	2002-03	2003-04	Dec 2004	Jan 2005	Feb 2005	2004	2005	
	\$m	\$m	\$m	\$m	\$m	\$m	\$m	\$m	%
Credits									
Freight	1 001	920	830	68	68	68	546	550	0.7
Other transportation	6 664	6 538	6 772	660	706	677	4 519	5 052	11.8
Travel	15 645	15 452	17 108	1 376	1 943	2 364	12 240	12 580	2.8
Other services	8 940	9 583	9 270	827	785	779	6 164	6 283	1.9
Total services credits	32 250	32 493	33 980	2 931	3 502	3 888	23 469	24 465	4.2
Debits									
Freight	-5 626	-5 808	-6 056	-682	-633	-582	-3 886	-5 069	30.4
Other transportation	-5 150	-5 152	-5 578	-516	-558	-506	-3 621	-3 987	10.1
Travel	-10 918	-11 012	-12 136	-1 102	-1 353	-977	-8 178	-9 122	11.5
Other services	-10 937	-10 919	-10 465	-881	-818	-807	-7 144	-6 769	-5.2
Total services debits	-32 631	-32 891	-34 235	-3 181	-3 362	-2 872	-22 829	-24 947	9.3
Memorandum items:									
Tourism related service credits(c)	19 800	19 503	21 081	1 770	2 377	2 769	14 975	15 537	3.8
Tourism related service debits(c)	-15 577	-15 691	-17 258	-1 575	-1 870	-1 439	-11 507	-12 768	11.0

(a) For sign conventions, see paragraph 9 of the Explanatory Notes.

(b) For more detailed trade in services by commodity, see table 7.

(c) For a more detailed explanation of tourism related services, see paragraphs 15 and 16 of the Explanatory Notes.

SERVICES (a), Summary: **Seasonally Adjusted and Trend Estimates**

May 2004	Jun 2004	Jul 2004	Aug 2004	Sep 2004	Oct 2004	Nov 2004	Dec 2004	Jan 2005	Feb 2005
\$m	\$m	\$m	\$m	\$m	\$m	\$m	\$m	\$m	\$m

SEASONALLY ADJUSTED

Credits

Freight	73	74	71	69	70	68	66	66	69	70
Other transportation	584	595	599	599	589	602	616	629	653	662
Travel	1 394	1 429	1 435	1 428	1 409	1 385	1 454	1 474	1 534	1 578
Other services	774	762	758	757	765	798	795	804	809	822
Total services credits	2 825	2 860	2 863	2 853	2 833	2 853	2 931	2 973	3 065	3 132

Debits

Freight	-550	-581	-591	-565	-624	-626	-653	-671	-705	-655
Other transportation	-484	-484	-435	-468	-482	-473	-484	-510	-563	-612
Travel	-1 048	-1 047	-1 055	-1 052	-1 078	-1 088	-1 109	-1 182	-1 159	-1 196
Other services	-845	-840	-827	-891	-824	-822	-818	-830	-844	-845
Total services debits	-2 927	-2 952	-2 908	-2 976	-3 008	-3 009	-3 064	-3 193	-3 271	-3 308

Memorandum items:

Tourism related service credits(b)	1 734	1 774	1 792	1 780	1 745	1 664	1 803	1 843	1 929	1 982
Tourism related service debits(b)	-1 475	-1 491	-1 440	-1 479	-1 530	-1 521	-1 532	-1 647	-1 688	-1 760

TREND ESTIMATES

Credits

Freight	71	72	72	71	69	68	68	68	68	68
Other transportation	590	594	596	596	599	607	618	631	643	655
Travel	1 423	1 420	1 414	1 412	1 416	1 430	1 452	1 482	1 513	1 544
Other services	768	765	764	766	773	783	794	804	812	819
Total services credits	2 852	2 851	2 846	2 845	2 857	2 888	2 932	2 985	3 036	3 086

Debits

Freight	-545	-563	-580	-597	-614	-632	-650	-665	-677	-686
Other transportation	-479	-474	-467	-463	-467	-481	-501	-526	-551	-574
Travel	-1 045	-1 049	-1 053	-1 062	-1 077	-1 098	-1 123	-1 147	-1 169	-1 188
Other services	-848	-847	-845	-841	-837	-833	-831	-831	-833	-834
Total services debits	-2 917	-2 933	-2 945	-2 963	-2 995	-3 044	-3 105	-3 169	-3 230	-3 282

Memorandum items:

Tourism related service credits(b)	1 762	1 762	1 755	1 748	1 749	1 765	1 798	1 842	1 890	1 936
Tourism related service debits(b)	-1 481	-1 479	-1 477	-1 482	-1 501	-1 536	-1 580	-1 628	-1 676	-1 716

(a) For sign conventions, see paragraph 9 of the Explanatory Notes.

(b) For a more detailed explanation of tourism related services, see paragraphs 15 and 16 of the Explanatory Notes.

	CREDITS				DEBITS			
	Mar Qtr	Jun Qtr	Sep Qtr	Dec Qtr	Mar Qtr	Jun Qtr	Sep Qtr	Dec Qtr
	2004	2004	2004	2004	2004	2004	2004	2004
	\$m	\$m	\$m	\$m	\$m	\$m	\$m	\$m
Services	9 689	7 733	8 545	8 530	-8 223	-8 643	-9 336	-9 377
Transportation services								
Passenger(c)	1 767	1 679	1 768	1 901	-1 112	-1 297	-1 293	-1 190
Freight	189	221	210	204	-1 431	-1 622	-1 834	-2 020
Other(c)	np	np	np	np	-193	-206	-217	-223
<i>Total transportation services</i>	<i>1 956</i>	<i>1 900</i>	<i>1 978</i>	<i>2 105</i>	<i>-2 736</i>	<i>-3 125</i>	<i>-3 344</i>	<i>-3 433</i>
Travel services								
Business	347	302	285	289	-752	-700	-763	-715
Personal								
Education-related	2 523	885	1 614	693	-168	-142	-234	-152
Other	2 613	2 293	2 435	2 957	-2 047	-2 190	-2 469	-2 459
Total personal	5 136	3 178	4 049	3 650	-2 215	-2 332	-2 703	-2 611
<i>Total travel services</i>	<i>5 483</i>	<i>3 480</i>	<i>4 334</i>	<i>3 939</i>	<i>-2 967</i>	<i>-3 032</i>	<i>-3 466</i>	<i>-3 326</i>
Communication services(d)	190	183	208	202	-189	-205	-189	-187
Construction services	18	27	21	20	—	—	—	—
Insurance services	171	173	171	171	-218	-220	-218	-218
Financial services	249	248	251	251	-147	-146	-146	-146
Computer and information services	269	297	289	320	-209	-256	-266	-286
Royalties and license fees	147	172	138	183	-474	-456	-485	-535
Other business services								
Merchanting and other trade-related	166	206	156	182	-45	-55	-56	-58
Operational leasing	3	5	5	4	-228	-192	-186	-173
Miscellaneous business, professional and technical								
Legal, accounting, management consulting and public relations	91	128	115	113	-72	-76	-84	-79
Advertising, market research and public opinion polling	15	22	22	30	-29	-53	-26	-27
Research and development	81	88	77	105	-48	-42	-37	-41
Architectural, engineering and other technical services	129	127	97	120	-70	-97	-104	-91
Agriculture, mining and on-site processing	25	31	30	30	-26	-22	-24	-23
Services between affiliated enterprises n.i.e.	244	245	245	340	-209	-209	-180	-266
Other	84	72	92	105	-85	-70	-74	-81
Total miscellaneous business, professional and technical	669	713	678	843	-539	-569	-529	-608
<i>Total other business services</i>	<i>838</i>	<i>924</i>	<i>839</i>	<i>1 029</i>	<i>-812</i>	<i>-816</i>	<i>-771</i>	<i>-839</i>
Personal, cultural and recreational services								
Audiovisual and related services	60	26	27	25	-206	-152	-247	-160
Other personal, cultural and recreational services	82	72	78	78	-71	-25	-30	-57
<i>Total other personal, cultural and recreational services</i>	<i>142</i>	<i>98</i>	<i>105</i>	<i>103</i>	<i>-277</i>	<i>-177</i>	<i>-277</i>	<i>-217</i>
Government services n.i.e.	226	231	211	207	-194	-210	-174	-190
Memorandum items:								
Tourism related services(e)	6 558	4 376	5 347	5 044	-4 161	-4 408	-4 849	-4 610

— nil or rounded to zero (including null cells)

np not available for publication but included in totals where applicable, unless otherwise indicated

(a) For sign conventions, see paragraph 9 of Explanatory Notes.

(b) For more information see paragraphs 13 and 14 of the Explanatory Notes.

(c) Passenger transportation credits include other transportation services credits.

(d) Communications services includes other services n.i.e..

(e) For a more detailed explanation of tourism related services, see paragraphs 15 and 16 of the Explanatory Notes.

				Per cent of total merchandise exports(a)	8 MONTHS ENDED FEBRUARY	
	Dec	Jan	Feb		2004	2005
	2004	2005	2005			
	\$m	\$m	\$m	%	\$m	\$m
MAJOR COMMODITIES						
011 Meat of bovine animals	409	na	na	..	2 390	na
041 Wheat	238	na	na	..	1 874	na
268 Wool and other animal hair	228	na	na	..	1 536	na
281 Iron ore and concentrates	591	na	na	..	3 383	na
285 Aluminium ore and concentrates	425	na	na	..	2 306	na
321 Coal, not agglomerated	1 289	na	na	..	6 684	na
333 Crude petroleum oils	356	na	na	..	3 213	na
334 Refined petroleum oils	171	na	na	..	1 349	na
343 Natural gas	319	na	na	..	1 484	na
684 Aluminium	336	na	na	..	2 401	na
781 Passenger motor vehicles	293	na	na	..	1 913	na
971 Gold, non-monetary	539	na	na	..	3 924	na
SECTIONS AND DIVISION OF THE SITC						
0 Food and live animals(b)						
00 Live animals other than fish, crustaceans, molluscs and aquatic invertebrates	73	na	na	..	573	na
01 Meat and meat preparations	592	na	na	..	3 537	na
02 Dairy products and birds' eggs	228	na	na	..	1 360	na
03 Fish (not marine mammals), crustaceans, molluscs and aquatic invertebrates, and preparations thereof(b)	122	na	na	..	898	na
04 Cereals and cereal preparations(b)	385	na	na	..	2 878	na
05 Vegetables and fruit	87	na	na	..	796	na
06 Sugars, sugar preparations and honey(b)	13	na	na	..	119	na
07 Coffee, tea, cocoa, spices, and manufactures thereof	25	na	na	..	196	na
08 Feeding stuff for animals (excl. unmilled cereals)(b)	73	na	na	..	589	na
09 Miscellaneous edible products and preparations	38	na	na	..	306	na
<i>Total food and live animals</i>	<i>1 635</i>	<i>na</i>	<i>na</i>	<i>..</i>	<i>11 252</i>	<i>na</i>
1 Beverages and tobacco						
11 Beverages	238	na	na	..	1 669	na
12 Tobacco and tobacco manufactures	6	na	na	..	55	na
<i>Total beverages and tobacco</i>	<i>244</i>	<i>na</i>	<i>na</i>	<i>..</i>	<i>1 723</i>	<i>na</i>
2 Crude materials, inedible, except fuels(b)						
21 Hides, skins and furskins, raw(b)	60	na	na	..	408	na
22 Oil seeds and oleaginous fruits	54	na	na	..	331	na
23 Crude rubber (incl. synthetic and reclaimed)	—	na	na	..	10	na
24 Cork and wood	98	na	na	..	630	na
25 Pulp and waste paper	11	na	na	..	37	na
26 Textile fibres and their wastes (not manufactured into yarn or fabric)(b)	259	na	na	..	2 156	na
27 Crude fertilisers (excl. those of Division 56) and crude minerals (excl. coal, petroleum and precious stones)	37	na	na	..	287	na
28 Metalliferous ores and metal scrap(b)	1 578	na	na	..	9 049	na
29 Crude animal and vegetable materials, n.e.s.	23	na	na	..	152	na
<i>Total crude materials, inedible, except fuels</i>	<i>2 120</i>	<i>na</i>	<i>na</i>	<i>..</i>	<i>13 059</i>	<i>na</i>
3 Mineral fuels, lubricants and related materials						
32 Coal, coke and briquettes	1 304	na	na	..	6 727	na
33 Petroleum, petroleum products and related materials	529	na	na	..	4 570	na
34 Gas, natural and manufactured	366	na	na	..	1 936	na
<i>Total mineral fuels, lubricants and related materials</i>	<i>2 199</i>	<i>na</i>	<i>na</i>	<i>..</i>	<i>13 233</i>	<i>na</i>

.. not applicable

— nil or rounded to zero (including null cells)

na not available

(a) Per cent of total merchandise is calculated for the most recent month.

(b) Excludes exports commodities subject to a confidentiality restriction. These are included in Division 98.

				Per cent of total merchandise exports(a)	8 MONTHS ENDED FEBRUARY.....	
	Dec	Jan	Feb		2004	2005
	2004	2005	2005		\$m	\$m
	\$m	\$m	\$m	%	\$m	\$m
SECTIONS AND DIVISION OF THE SITC						
4 Animal and vegetable oils, fats and waxes(b)						
41 Animal oils and fats	13	na	na	. .	152	na
42 Fixed vegetable fats and oils, crude, refined or fractionated(b)	5	na	na	. .	33	na
43 Fats and oils (processed), waxes and inedible mixtures or preparations, of animal or vegetable origin, n.e.s.	6	na	na	. .	35	na
<i>Total animal and vegetable oils, fats and waxes</i>	24	na	na	. .	219	na
5 Chemicals and related products, n.e.s.(b)						
51 Organic chemicals(b)	13	na	na	. .	76	na
52 Inorganic chemicals(b)	37	na	na	. .	349	na
53 Dyeing, tanning and colouring materials	53	na	na	. .	390	na
54 Medicinal and pharmaceutical products	239	na	na	. .	1 552	na
55 Essential oils and resinoids and perfume materials; toilet, polishing and cleansing preparations	36	na	na	. .	278	na
56 Fertilisers (excl. crude)(b)	26	na	na	. .	125	na
57 Plastics in primary forms	26	na	na	. .	133	na
58 Plastics in non-primary forms	28	na	na	. .	166	na
59 Chemical materials and products, n.e.s.	60	na	na	. .	385	na
<i>Total chemicals and related products, n.e.s.</i>	517	na	na	. .	3 454	na
6 Manufactured goods classified chiefly by material(b)						
61 Leather, leather manufactures, and dressed furskins, n.e.s.	41	na	na	. .	316	na
62 Rubber manufactures, n.e.s.(b)	14	na	na	. .	92	na
63 Cork and wood manufactures (excl. furniture)	21	na	na	. .	132	na
64 Paper, paperboard, and articles of paper pulp, of paper or of paperboard	57	na	na	. .	467	na
65 Textile yarn, fabrics, made-up articles, n.e.s., and related products	39	na	na	. .	298	na
66 Non-metallic mineral manufactures, n.e.s.(b)	52	na	na	. .	584	na
67 Iron and steel(b)	65	na	na	. .	590	na
68 Non-ferrous metals	628	na	na	. .	4 192	na
69 Manufactures of metals, n.e.s.	76	na	na	. .	487	na
<i>Total manufactured goods classified chiefly by material</i>	993	na	na	. .	7 157	na
7 Machinery and transport equipment(b)						
71 Power generating machinery and equipment	98	na	na	. .	550	na
72 Machinery specialised for particular industries	117	na	na	. .	741	na
73 Metal working machinery	15	na	na	. .	97	na
74 General industrial machinery and equipment, n.e.s. and machine parts, n.e.s.(b)	154	na	na	. .	780	na
75 Office machines and automatic data processing machines	106	na	na	. .	817	na
76 Telecommunications and sound recording and reproducing apparatus and equipment	81	na	na	. .	501	na
77 Electrical machinery, apparatus, appliances, parts (incl. non-elec. counterparts of electrical domestic equip)	168	na	na	. .	967	na
78 Road vehicles (incl. air-cushion vehicles)	397	na	na	. .	2 755	na
79 Transport equipment (excl. road vehicles)	85	na	na	. .	715	na
<i>Total machinery and transport equipment</i>	1 221	na	na	. .	7 923	na

. . not applicable

na not available

(a) Per cent of total merchandise is calculated for the most recent month.

(b) Excludes exports commodities subject to a confidentiality restriction. These are included in Division 98.

				Per cent of total merchandise exports(a)	8 MONTHS ENDED FEBRUARY	
	Dec	Jan	Feb		2004	2005
	2004	2005	2005			
	\$m	\$m	\$m	%	\$m	\$m
SECTIONS AND DIVISION OF THE SITC						
8 Miscellaneous manufactured articles(b)						
81 Prefabricated buildings; sanitary, plumbing, heating and lighting fixtures and fittings, n.e.s.	9	na	na	. .	62	na
82 Furniture, parts thereof; bedding, mattresses, mattress supports, cushions and similar stuffed furnishings	12	na	na	. .	94	na
83 Travel goods, handbags and similar containers	2	na	na	. .	15	na
84 Articles of apparel and clothing accessories	17	na	na	. .	201	na
85 Footwear(b)	3	na	na	. .	31	na
87 Professional, scientific and controlling instruments and apparatus, n.e.s.	152	na	na	. .	787	na
88 Photographic apparatus, equipment and supplies and optical goods, nes; watches and clocks	32	na	na	. .	368	na
89 Miscellaneous manufactured articles, n.e.s.	192	na	na	. .	1 229	na
<i>Total miscellaneous manufactured articles</i>	<i>419</i>	<i>na</i>	<i>na</i>	<i>. .</i>	<i>2 787</i>	<i>na</i>
9 Commodities and transactions not classified elsewhere in the SITC(c)(d)						
93 Special transactions and commodities not classified according to kind	205	na	na	. .	1 573	na
95 Gold coin whether or not legal tender, and other coin being legal tender	17	na	na	. .	65	na
96 Coin (excl. gold coin), not being legal tender	—	na	na	. .	—	na
97 Gold, non-monetary (excl. gold ores and concentrates)	539	na	na	. .	3 924	na
98 Combined confidential items excl some of SITC 280 (exports only) and some of SITCs 510 and 520 (imports only)(c)(d)	446	na	na	. .	3 527	na
<i>Total commodities and transactions not classified elsewhere in the SITC</i>	<i>1 206</i>	<i>na</i>	<i>na</i>	<i>. .</i>	<i>9 089</i>	<i>na</i>
Total Merchandise Exports	10 578	na	na	. .	69 895	na
Balance of Payments Adjustments	153	na	na	. .	241	na
Goods Credits (exports) on a Balance of Payments Basis	10 731	na	na	. .	70 136	na

. . not applicable

— nil or rounded to zero (including null cells)

na not available

(a) Per cent of total merchandise is calculated for the most recent month.

(b) Excludes exports commodities subject to a confidentiality restriction. These are included in Division 98.

(c) Includes exports commodities subject to a confidentiality restriction.

(d) Includes small value export entries which can not yet be allocated by commodity.

INTERNATIONAL MERCHANDISE IMPORTS, By commodity

	Dec 2004	Jan 2005	Feb 2005	Per cent of total merchandise imports(a)	8 MONTHS ENDED FEBRUARY	
					2004	2005
	\$m	\$m	\$m	%	\$m	\$m
MAJOR COMMODITIES						
333 Crude petroleum oils	861	549	719	6.5	3 815	6 081
334 Refined petroleum oils	455	405	222	2.0	2 000	2 854
542 Medicaments	396	405	541	4.9	3 129	3 744
641 Paper and paperboard	164	170	163	1.5	1 364	1 403
752 Automatic data processing machines	477	372	382	3.4	3 068	3 559
759 Parts and accessories of office machines	179	150	149	1.3	1 408	1 403
764 Telecommunications equipment	432	341	359	3.2	2 604	3 360
781 Passenger motor vehicles	938	1 020	895	8.1	7 274	7 416
782 Motor vehicles for the transport of goods	308	326	280	2.5	1 914	2 554
784 Parts and accessories of motor vehicles	167	181	178	1.6	1 388	1 510
792 Aircraft and associated equipment	226	65	81	0.7	2 838	2 249
971 Gold, non-monetary	206	186	163	1.5	1 738	1 517

SECTION AND DIVISION OF THE SITC

0	Food and live animals					
00	Live animals other than fish, crustaceans, molluscs and aquatic invertebrates	6	7	25	0.2	50 62
01	Meat and meat preparations	30	29	30	0.3	166 215
02	Dairy products and birds' eggs	35	31	31	0.3	196 244
03	Fish (not marine mammals), crustaceans, molluscs and aquatic invertebrates, and preparations thereof	86	76	78	0.7	614 658
04	Cereals and cereal preparations	35	31	30	0.3	247 283
05	Vegetables and fruit	109	92	80	0.7	656 749
06	Sugars, sugar preparations and honey	15	12	13	0.1	121 120
07	Coffee, tea, cocoa, spices, and manufactures thereof	59	58	51	0.5	430 479
08	Feeding stuff for animals (excl. unmilled cereals)	26	19	13	0.1	178 179
09	Miscellaneous edible products and preparations	98	114	87	0.8	697 770
	<i>Total food and live animals</i>	<i>498</i>	<i>469</i>	<i>438</i>	<i>3.9</i>	<i>3 355 3 761</i>
1	Beverages and tobacco					
11	Beverages	86	62	51	0.5	511 577
12	Tobacco and tobacco manufactures	21	16	9	0.1	122 115
	<i>Total beverages and tobacco</i>	<i>107</i>	<i>77</i>	<i>60</i>	<i>0.5</i>	<i>632 691</i>
2	Crude materials, inedible, except fuels					
21	Hides, skins and furskins, raw	—	—	—	—	2 1
22	Oil seeds and oleaginous fruits	5	9	7	0.1	56 38
23	Crude rubber (incl. synthetic and reclaimed)	10	13	13	0.1	82 97
24	Cork and wood	46	50	46	0.4	398 416
25	Pulp and waste paper	11	17	19	0.2	147 150
26	Textile fibres and their wastes (not manufactured into yarn or fabric)	12	12	12	0.1	100 105
27	Crude fertilisers (excl. those of Division 56) and crude minerals (excl. coal, petroleum and precious stones)	10	12	10	0.1	135 111
28	Metalliferous ores and metal scrap	24	26	16	0.1	199 181
29	Crude animal and vegetable materials, n.e.s.	27	26	23	0.2	173 186
	<i>Total crude materials, inedible, except fuels</i>	<i>146</i>	<i>165</i>	<i>148</i>	<i>1.3</i>	<i>1 294 1 284</i>
3	Mineral fuels, lubricants and related materials(b)					
32	Coal, coke and briquettes	1	3	—	—	10 14
33	Petroleum, petroleum products and related materials(b)	1 340	979	982	8.8	5 991 9 193
34	Gas, natural and manufactured	9	—	21	0.2	111 93
	<i>Total mineral fuels, lubricants and related materials</i>	<i>1 350</i>	<i>982</i>	<i>1 003</i>	<i>9.0</i>	<i>6 112 9 300</i>

— nil or rounded to zero (including null cells)

(a) Per cent of total merchandise imports is calculated for the most recent month.

(b) Excludes imports commodities subject to a confidentiality restriction. These are included in Division 98.

					8 MONTHS ENDED FEBRUARY					
					<i>Per cent of total merchandise imports(a)</i>					
					<i>Dec 2004</i>	<i>Jan 2005</i>	<i>Feb 2005</i>		<i>2004</i>	<i>2005</i>
					\$m	\$m	\$m	%	\$m	\$m
SECTION AND DIVISION OF THE SITC										
4	Animal and vegetable oils, fats and waxes									
41	Animal oils and fats				2	1	1	—	19	11
42	Fixed vegetable fats and oils, crude, refined or fractionated				21	23	16	0.1	189	205
43	Fats and oils (processed), waxes and inedible mixtures or preparations, of animal or vegetable origin, n.e.s.				3	4	4	—	28	30
	Total animal and vegetable oils, fats and waxes				26	28	22	0.2	236	246
5	Chemicals and related products, n.e.s.(b)									
51	Organic chemicals				248	209	247	2.2	1 477	1 763
52	Inorganic chemicals(b)				64	83	86	0.8	458	565
53	Dyeing, tanning and colouring materials				46	45	39	0.3	339	363
54	Medicinal and pharmaceutical products				522	471	612	5.5	3 836	4 535
55	Essential oils and resinoids and perfume materials; toilet, polishing and cleansing preparations				116	109	100	0.9	816	917
56	Fertilisers (excl. crude)				97	104	103	0.9	350	587
57	Plastics in primary forms				110	114	110	1.0	753	873
58	Plastics in non-primary forms				98	99	91	0.8	677	770
59	Chemical materials and products, n.e.s.				131	121	121	1.1	926	1 007
	Total chemicals and related products, n.e.s.				1 433	1 354	1 508	13.6	9 633	11 380
6	Manufactured goods classified chiefly by material(b)									
61	Leather, leather manufactures, and dressed furskins, n.e.s.				16	10	12	0.1	108	108
62	Rubber manufactures, n.e.s.(b)				164	157	144	1.3	1 132	1 235
63	Cork and wood manufactures (excl. furniture)				47	58	59	0.5	421	444
64	Paper, paperboard, and articles of paper pulp, of paper or of paperboard(b)				203	205	198	1.8	1 659	1 733
65	Textile yarn, fabrics, made-up articles n.e.s. and related products				176	192	186	1.7	1 641	1 686
66	Non-metallic mineral manufactures, n.e.s.				175	160	161	1.4	1 355	1 437
67	Iron and steel(b)				280	267	286	2.6	1 312	2 006
68	Non-ferrous metals(b)				78	80	74	0.7	660	646
69	Manufactures of metals, n.e.s.(b)				316	276	295	2.7	2 093	2 514
	Total manufactured goods classified chiefly by material				1 454	1 406	1 415	12.7	10 380	11 808
7	Machinery and transport equipment(b)									
71	Power generating machinery and equipment				247	240	269	2.4	1 990	2 225
72	Machinery specialised for particular industries				572	478	483	4.4	3 308	3 917
73	Metal working machinery				70	44	74	0.7	418	470
74	General industrial machinery and equipment, n.e.s. and machine parts, n.e.s.				752	637	580	5.2	4 717	5 617
75	Office machines and automatic data processing machines				707	563	572	5.1	4 776	5 366
76	Telecommunications and sound recording and reproducing apparatus and equipment				714	513	570	5.1	4 700	5 904
77	Electrical machinery, apparatus, appliances, parts (incl. non-electrical counterparts of electrical domestic equipment)(b)				652	628	569	5.1	4 501	5 200
78	Road vehicles (incl. air-cushion vehicles)				1 569	1 660	1 469	13.2	11 487	12 598
79	Transport equipment (excl. road vehicles)				305	147	117	1.1	3 339	2 723
	Total machinery and transport equipment				5 587	4 911	4 703	42.3	39 234	44 020

— nil or rounded to zero (including null cells)

(a) Per cent of total merchandise imports is calculated for the most recent month.

(b) Excludes imports commodities subject to a confidentiality restriction. These are included in Division 98.

					8 MONTHS ENDED FEBRUARY	
					2004	2005
					\$m	\$m
SECTION AND DIVISION OF THE SITC						
8	Miscellaneous manufactured articles(b)					
81	Prefabricated buildings; sanitary, plumbing, heating and lighting fixtures and fittings, n.e.s.	44	38	39	0.3	308 358
82	Furniture, parts thereof; bedding, mattresses, mattress supports, cushions and similar stuffed furnishings	172	139	134	1.2	1 083 1 360
83	Travel goods, handbags and similar containers	44	41	43	0.4	335 407
84	Articles of apparel and clothing accessories	228	389	391	3.5	2 236 2 708
85	Footwear	69	113	109	1.0	627 760
87	Professional, scientific and controlling instruments and apparatus, n.e.s.	298	254	281	2.5	2 023 2 361
88	Photographic apparatus, equipment and supplies and optical goods, n.e.s.; watches and clocks(b)	109	96	110	1.0	896 947
89	Miscellaneous manufactured articles, n.e.s.	596	493	528	4.7	5 094 5 289
	<i>Total miscellaneous manufactured articles</i>	<i>1 560</i>	<i>1 562</i>	<i>1 635</i>	<i>14.7</i>	<i>12 603 14 190</i>
9	Commodities and transactions not classified elsewhere in the SITC(c)					
93	Special transactions and commodities not classified according to kind	3	3	2	—	19 21
95	Gold coin whether or not legal tender, and other coin being legal tender	1	1	1	—	4 5
96	Coin (excl. gold coin), not being legal tender	—	—	—	—	1 18
97	Gold, non-monetary (excl. gold ores and concentrates)	206	186	163	1.5	1 738 1 517
98	Combined confidential items excl. some of SITC 280 (exports only) and some of SITCs 510 and 520 (imports only)(c)	16	14	15	0.1	169 135
	<i>Total commodities and transactions not classified elsewhere in the SITC</i>	<i>225</i>	<i>203</i>	<i>181</i>	<i>1.6</i>	<i>1 931 1 696</i>
	Total Merchandise Imports	12 384	11 157	11 113	100.0	85 410 98 376
	Balance of Payments Adjustment	127	122	121	. .	1 207 782
	Goods Debits (imports) on a Balance of Payments Basis	12 511	11 279	11 234	. .	86 617 99 158

. . not applicable

— nil or rounded to zero (including null cells)

(a) Per cent of total merchandise imports is calculated for the most recent month.

(b) Excludes imports commodities subject to a confidentiality restriction. These are included in Division 98.

(c) Includes imports commodities subject to a confidentiality restriction.

	EXPORTS				IMPORTS				BALANCE OF MERCHANDISE TRADE	
	2003-04	February 2005	8 months ended February 2004	8 months ended February 2005	2003-04	February 2005	8 months ended February 2004	8 months ended February 2005	2003-04	8 months ended February 2005
	\$m	\$m	\$m	\$m	\$m	\$m	\$m	\$m	\$m	\$m
Belgium(b)	676	na	435	na	1 237	100	773	740	-561	na
Brazil	512	na	332	na	494	47	347	405	18	na
Canada	1 828	na	1 085	na	1 818	133	1 209	1 226	10	na
China	9 935	na	6 095	na	15 338	1 596	10 070	13 613	-5 403	na
Denmark	167	na	108	na	856	127	551	718	-690	na
Egypt(c)	649	na	330	na	36	1	29	10	614	na
Fiji	430	na	292	na	210	16	138	150	220	na
Finland	575	na	367	na	651	53	404	520	-76	na
France	939	na	589	na	3 816	260	2 597	2 801	-2 877	na
Germany	1 309	na	837	na	7 985	584	5 367	5 703	-6 676	na
Hong Kong (SAR of China)	2 754	na	1 795	na	1 202	90	795	847	1 552	na
India	4 865	na	3 019	na	1 000	98	661	825	3 865	na
Indonesia	2 984	na	1 841	na	3 765	361	2 405	2 335	-781	na
Iran	125	na	100	na	43	2	31	14	82	na
Iraq	315	na	209	na	—	—	—	6	315	na
Ireland	172	na	114	na	1 686	153	1 070	1 232	-1 514	na
Israel	160	na	126	na	470	51	312	377	-310	na
Italy	1 375	na	935	na	4 215	326	2 730	3 062	-2 840	na
Japan	19 821	na	12 513	na	16 101	1 401	10 552	11 487	3 721	na
Korea, Republic of	8 490	na	5 529	na	4 877	376	3 173	3 338	3 613	na
Kuwait	580	na	394	na	110	1	74	76	470	na
Malaysia	2 224	na	1 350	na	4 707	359	2 879	3 748	-2 483	na
Mexico	341	na	261	na	603	62	389	487	-262	na
Netherlands	1 368	na	924	na	1 197	98	781	860	171	na
New Zealand	8 094	na	5 363	na	5 056	415	3 306	3 520	3 038	na
Pakistan	438	na	350	na	161	12	107	100	277	na
Papua New Guinea	809	na	523	na	1 422	143	898	1 118	-613	na
Philippines	938	na	591	na	762	47	535	473	175	na
Saudi Arabia	1 992	na	1 301	na	757	58	454	713	1 235	na
Singapore	3 061	na	1 837	na	5 112	389	3 176	4 394	-2 051	na
South Africa	1 427	na	877	na	1 246	110	790	821	182	na
Spain	659	na	430	na	1 103	75	719	919	-444	na
Sweden	228	na	134	na	1 739	173	1 130	1 245	-1 511	na
Switzerland	181	na	118	na	1 190	106	773	960	-1 009	na
Taiwan	3 705	na	2 347	na	3 396	264	2 186	2 495	308	na
Thailand	2 463	na	1 491	na	3 669	299	2 410	2 613	-1 206	na
Turkey	277	na	186	na	262	28	159	249	16	na
United Arab Emirates	1 185	na	760	na	742	8	522	704	443	na
United Kingdom	5 147	na	3 762	na	5 429	438	3 557	3 881	-282	na
United States of America	9 481	na	6 145	na	19 929	1 517	13 001	13 856	-10 448	na
Viet Nam	512	na	275	na	2 019	302	1 374	2 034	-1 506	na
Other Countries(d)	5 858	na	3 826	na	4 587	434	2 974	3 699	1 271	na
Total	109 049	na	69 895	na	130 997	11 113	85 410	98 376	-21 947	na
APEC	77 838	na	49 300	na	91 075	7 879	59 194	68 597	-13 237	na
ASEAN	12 273	na	7 438	na	20 551	1 826	13 097	16 134	-8 278	na
Developing Countries	52 823	na	33 337	na	52 071	4 723	33 746	42 084	752	na
Least Developed Countries	1 183	na	746	na	213	18	135	155	970	na
European Union(e)	12 951	na	8 848	na	31 500	2 543	20 720	23 042	-18 549	na
OECD	61 426	na	40 025	na	81 841	6 617	53 621	58 507	-20 415	—

— nil or rounded to zero (including null cells)

na not available

(a) See AusStats for details of all countries.

(b) Prior to July 2003, Belgium and Luxembourg were combined.

Belgium-Luxembourg is included in 'Other Countries' up to and including June 2003.

(c) Exports of Alumina to Egypt are excluded from its country total and included in the 'Other countries' category.

(d) Includes small value export entries which can not yet be allocated by country.

(e) From July 2004, European Union includes 25 member countries.

	8 MONTHS ENDED FEBRUARY			
	2003-04	Feb 2005	2004	2005
	\$m	\$m	\$m	\$m
EXPORTS (a)				
New South Wales	19 091	na	11 846	na
Victoria	18 012	na	11 374	na
Queensland	20 128	na	12 641	na
South Australia	7 608	na	4 976	na
Western Australia	32 302	na	21 163	na
Tasmania	2 317	na	1 459	na
Northern Territory	1 883	na	1 243	na
Australian Capital Territory	1	na	1	na
State not available for publication(b)(c)	344	na	235	na
Re-exports	7 362	na	4 956	na
Total exports	109 049	na	69 895	na
IMPORTS				
New South Wales	53 763	4 485	35 036	39 727
Victoria	40 727	3 485	26 750	30 046
Queensland	18 079	1 624	11 641	14 221
South Australia	5 163	442	3 363	3 800
Western Australia	11 690	968	7 708	8 954
Tasmania	669	52	432	434
Northern Territory	899	58	477	1 192
Australian Capital Territory	7	—	4	3
Total imports	130 997	11 113	85 410	98 376

— nil or rounded to zero (including null cells)

na not available

(a) State in which the final stage of production or manufacture occurs.

(b) Includes exports which can not yet be allocated by state. These shipments will be appropriately classified as more details become available.

(c) Exports of Alumina to Bahrain, Egypt and Iceland are excluded from the state totals and included in 'State not available for publication' category.

PERIOD AVERAGE EXCHANGE RATES(a): Per Australian Dollar

<i>Period</i>	<i>United States dollar</i>	<i>United Kingdom pound</i>	<i>euro</i>	<i>Japanese yen</i>	<i>Trade-weighted index of value of the \$A(b)</i>
FINANCIAL YEAR					
2001-02	0.5239	0.3632	0.5850	66.10	50.7
2002-03	0.5848	0.3685	0.5577	70.01	53.5
2003-04	0.7137	0.4102	0.5981	78.91	61.5
MONTHS					
2003					
December	0.7383	0.4223	0.6018	79.62	63.0
2004					
January	0.7695	0.4227	0.6101	81.89	64.8
February	0.7777	0.4165	0.6152	82.84	65.2
March	0.7498	0.4100	0.6110	81.45	63.6
April	0.7442	0.4121	0.6201	79.98	63.3
May	0.7054	0.3948	0.5874	79.01	60.9
June	0.6942	0.3794	0.5714	75.90	59.5
July	0.7164	0.3887	0.5835	78.29	61.1
August	0.7104	0.3903	0.5828	78.37	60.8
September	0.7013	0.3912	0.5743	77.20	59.9
October	0.7331	0.4057	0.5868	79.81	62.0
November	0.7689	0.4139	0.5925	80.61	63.7
December	0.7678	0.3981	0.5735	79.70	62.7
2005					
January	0.7647	0.4071	0.5830	78.98	62.7
February	0.7807	0.4139	0.5999	81.92	64.1

(a) These exchange rates and the trade-weighted index are derived using rates provided by the Reserve Bank of Australia in respect of each trading day.

(b) May 1970=100. The trade-weighted index is reweighted annually (on 1 October) and on special occasions if required.

EXPLANATORY NOTES

INTRODUCTION

1 This publication presents preliminary estimates of Australia's international trade in goods and services on a balance of payments basis and merchandise import and export statistics on a recorded trade basis.

2 Merchandise trade statistics on a recorded trade basis are compiled from information submitted by exporters and importers or their agents to the Australian Customs Service (ACS). Adjustments for coverage, timing and valuation are made to recorded trade data to convert them to a balance of payments basis. The main source for services data is the quarterly Survey of International Trade in Services.

3 More comprehensive quarterly estimates of Australia's trade in goods and services, together with comprehensive details of Australia's balance of payments are included in the quarterly publication, *Balance of Payments and International Investment Position, Australia* (cat. no. 5302.0). Detailed monthly statistics on merchandise trade are available on AusStats or by subscription to tailored services.

CONCEPTS, SOURCES AND METHODS

4 The conceptual framework used in compiling Australia's merchandise trade statistics can be found in *International Merchandise Trade, Australia: Concepts, Sources and Methods, 2001* (cat. no. 5489.0).

5 The conceptual framework used in compiling Australia's balance of payments statistics is based on the Fifth Edition of the International Monetary Fund's *Balance of Payments Manual* (BPM5, 1993). Descriptions of the underlying concepts and structure of the balance of payments and the sources, methods and terms used in compiling the estimates are presented in *Balance of Payments and International Investment Position, Australia: Concepts, Sources and Methods, 1998* (cat. no. 5331.0). To bring merchandise trade statistics on a recorded trade basis to a balance of payments basis, timing adjustments are made to ensure that the transaction is recorded in the period in which ownership changed, rather than in the period in which the transaction was recorded by ACS. Adjustments are also made to imports to take account of distortions which arise when significant changes occur in the volume of import entries lodged but not yet processed by ACS in a given month. Chapter 6 of cat. no. 5331.0 provides more detail on the relationship between statistics on international merchandise trade on a recorded trade basis and on a balance of payments basis.

6 Both of the Concepts, Sources and Methods publications are available for free from the ABS web site, see <<http://www.abs.gov.au>> – select *About Statistics* then *Concepts & Classifications*.

SEASONAL ADJUSTMENT

7 Monthly original estimates are volatile, being subject to calendar-related and large irregular influences. Seasonally adjusted estimates are derived by estimating and removing systematic calendar related effects, such as seasonal and trading day influences, from the original series. Trading day effects are removed from the original estimates prior to the seasonal adjustment process. Seasonal adjustment does not aim to remove the irregular or non-seasonal influences which may be present in any particular month. These irregular influences may reflect both random economic events and difficulties of statistical recording. The estimates of international trade in goods and services on a balance of payments basis are seasonally adjusted. The merchandise exports and imports statistics on a recorded trade basis are not.

TREND ESTIMATES

8 The month-to-month movements of the seasonally adjusted estimates may not be reliable indicators of trend behaviour because they include irregular or non-seasonal movements. Trend estimates are derived by applying a 13-term Henderson moving average to the seasonally adjusted series. The use of a 13-term Henderson average can result in revisions to the estimates for the most recent six months as additional observations become available. Revisions can also occur because of changes in the original data and as a result of the annual re-estimation of the seasonal factors.

EXPLANATORY NOTES *continued*

SIGN CONVENTION

9 In keeping with balance of payments conventions, where statistics are on a balance of payments basis, credit entries (exports) are shown without sign and debit items (imports) are shown as negative entries. For statistics on a recorded trade basis, both imports and exports are shown without sign. The calculation of percentage changes on balance of payments debit items are made without regard to sign. References to balance of payments debit items in Key Figures, Key Points, and Analysis and Comments are also made without regard to sign.

COMMODITY BREAKDOWNS OF GOODS

10 For details of the classification used for goods exports on a balance of payments basis (credits), see table 6.6 in *Balance of Payments and International Investment Position, Australia: Concepts, Sources and Methods, 1998* (cat. no. 5331.0).

11 Details of the classification of goods imports on a balance of payments basis (debits) are provided in table 6.7 in cat. no. 5331.0. Most of the commodity groups shown in table 4 for goods debits are available for more detailed subgroups from AusStats.

12 The recorded trade statistics shown in tables 8 and 9 are classified by the Standard International Trade Classification 2 (SITC). The first section of tables 8 and 9 show the most significant commodities (by value) at the SITC 3 digit level.

COMMODITY BREAKDOWNS OF SERVICES

13 The quarterly detailed services data published in table 7 are consistent with the monthly aggregates shown in table 5. Services trade data by major partner countries and by Australian state of production/consumption are published on a financial year basis and a calendar year basis.

14 Monthly indicators for many of the services components that are only surveyed quarterly are not available. In particular, the Freight and Other transportation components of Total services credits are not available for publication on a monthly basis. The estimates for these items shown in table 5 are therefore derived by dividing the quarterly estimate by three. Where quarterly survey data are not available, freight debits are derived directly from imports data for the reference month as a difference between total merchandise cost, insurance and freight (CIFE) and free on board (FOB), adjusted to reflect timing and processing adjustments. For freight credits and other transportation credits and debits, estimates are derived by extrapolating the last month's data by an average of movements for the same month over the three previous years.

TOURISM RELATED SERVICES

15 The tourism related services memorandum items provide timely indicators of the movements in tourism related activities, not an absolute measure of the level of these activities. These series are not compiled on a Balance of Payments conceptual basis. However, they do provide a reasonable approximation of world tourism related activities.

16 The memorandum items have been derived by re-aggregating relevant components of the international trade in services series of the balance of payments accounts. The tourism related indicator has been derived by combining total travel services (business, education-related and other personal travel), passenger fares, and the air transport component of other transportation services which relates to agency fees and commission receipts.

RELATED PRODUCTS OR SERVICES

17 More detailed balance of payments and recorded merchandise trade data, including forward seasonal factors, are available from AusStats. Very detailed merchandise trade data by commodity, country and state are available by contacting the National Information and Referral Service, as shown on the back of this publication.

18 Users may also wish to refer to the following publications which are available from ABS Bookshops and on the ABS web site:

- *Balance of Payments and International Investment Position, Australia* (cat. no. 5302.0) – issued quarterly

EXPLANATORY NOTES *continued*

RELATED PRODUCTS OR SERVICES *continued*

- *International Merchandise Imports, Australia* (cat. no. 5439.0) – issued monthly
- *International Trade Price Indexes, Australia* (cat. no. 6457.0) – issued quarterly
- *Balance of Payments and International Investment Position, Australia: Concepts, Sources and Methods* (cat. no. 5331.0)
- *Information Paper: Quality of Australian Balance of Payments Statistics* (cat. no. 5342.0)
- *International Merchandise Trade, Australia: Concepts, Sources and Methods* (cat. no. 5489.0)
- *A Guide to Australian Balance of Payments and International Investment Position Statistics* (cat. no. 5362.0.55.001).

19 The last four publications are available for free on the ABS web site <<http://www.abs.gov.au>> – select *About Statistics* then *Concepts & Classifications*.

CAUTIONARY NOTE

20 The tables in this publication are presented on two bases. Tables 1–7 contain estimates of Australia's international trade in goods and services which have been adjusted for coverage, valuation and timing to a balance of payments basis. Tables 8–11 contain estimates of merchandise exports and imports based on Australian Customs Service records. Paragraph 5 of the Explanatory Notes provides an explanation of the difference between these bases.

APPENDIX RELATED ARTICLES

Article	Source	Issue
Investment		
Kangaroo bonds	5302.0	Sep qtr 2004
Foreign ownership of equity	5302.0	Sep qtr 2004
Gross external debt	5302.0	Sep qtr 2003
Measuring Australia's foreign currency exposure	5302.0	Dec qtr 2001
Balance of payments		
International comparison of balance of payments statistics	5363.0	1999–2000
The Sydney Olympic Games Update	5368.0	Jul 2000
The Sydney Olympic Games	5302.0	Sep qtr 1999
Merchandise trade		
Australia's Importers, 2003–04	(a) web site	Nov 2004
Australia's Exporters, 2003–04	(a) web site	Oct 2004
Australia's Trade with the USA	(a) web site	Mar 2004
Australia's Exporters, 2002–03	(a) web site	Oct 2003
Australia's Importers, 2002–03	(a) web site	Nov 2003
Export and import currencies, 2003	(a) web site	May 2003
Australia's exporters and importers, 2001–02	5422.0	Dec qtr 2002
Trade through Australia's ports	5422.0	Sep qtr 2002
Australia's trade in wine	5422.0	Dec qtr 2001
Australia's export markets, 1991–92 to 2000–01	5422.0	Jun qtr 2001
Major commodities traded by Australia, 1991 to 2000	5422.0	Dec qtr 2000
Australia's trade in crude petroleum	5422.0	Mar qtr 2000
Australia's merchandise trade with the Republic of Korea	5422.0	Sep qtr 1999
Australia's merchandise trade with Japan	5422.0	Mar qtr 1999
Bilateral merchandise trade statistics reconciliation: Australia and the European Union, 1992 to 1997	5422.0	Sep qtr 1998
Trade in services		
International trade in services by partner country, 2003–04	(a) web site	Nov 2004
International trade in services by State, 2003–04	(a) web site	Nov 2004
International trade in services by partner country, 2003	(a) web site	Mar 2004
International trade in services by State, 2003	(a) web site	Mar 2004
International trade in services by partner country, 2002–03	(a) web site	Oct 2003
International trade in services by State, 2002–03	(a) web site	Oct 2003
Goods and services by region, 2001	5368.0	Feb 2002
International trade in education services	(a) web site	Oct 2002
Finance		
Recent trends in construction and first home buyers finance	5609.0	Mar 2002
Household sector data in the financial accounts	5232.0	Mar qtr 2002
Investment Managers	5655.0	Jun qtr 2000
Venture capital, 1999–2000	5611.0	2000–01
Impact of 2003–2004 farm season on Australian production	5611.0	1999–2000
Globalisation		
Foreign Ownership of Australian Exporters and Importers, 2002–03	5496.0.55.001	2002–03
Australian Outward Foreign Affiliates Trade, 2002–03	5495.0	2002–03
Economic Activity of Foreign Owned Businesses in Australia, 2000–01	5494.0	2000–01
Technical information		
Implementation of New Customs Systems	(a) web site	Aug 2004
Changes to country and port classifications	5368.0	May 2003
The effect of customs changes on export statistics	5422.0	Jun qtr 2002
Harmonized system changes	5422.0	Sep qtr 2001
International trade review: data quality and client queries	5422.0	Jun qtr 2000
Data confidentiality	5422.0	Dec qtr 1999

(a) International Trade Theme Page: Select Themes; Economy; International Trade; Topics of Interest.

FOR MORE INFORMATION . . .

- INTERNET** www.abs.gov.au the ABS web site is the best place to start for access to summary data from our latest publications, information about the ABS, advice about upcoming releases, our catalogue, and Australia Now—a statistical profile.
- LIBRARY** A range of ABS publications is available from public and tertiary libraries Australia-wide. Contact your nearest library to determine whether it has the ABS statistics you require, or visit our web site for a list of libraries.
- CPI INFOLINE** For current and historical Consumer Price Index data, call 1902 981 074 (call cost 77c per minute).
- DIAL-A-STATISTIC** This service now provides only current Consumer Price Index statistics call 1900 986 400 (call cost 77c per minute).

INFORMATION SERVICE

Data already published that can be provided within five minutes will be free of charge. Our information consultants can also help you to access the full range of ABS information—ABS user pays services can be tailored to your needs, time frame and budget. Publications may be purchased. Specialists are on hand to help you with analytical or methodological advice.

- PHONE** 1300 135 070
- EMAIL** client.services@abs.gov.au
- FAX** 1300 135 211
- POST** Client Services, ABS, GPO Box 796, Sydney NSW 2001

WHY NOT SUBSCRIBE?

ABS subscription services provide regular, convenient and prompt deliveries of selected ABS publications and products as they are released. Email delivery of monthly and quarterly publications is available.

- PHONE** 1300 366 323
- EMAIL** subscriptions@abs.gov.au
- FAX** (03) 9615 7848
- POST** Subscription Services, ABS, GPO Box 2796Y, Melbourne Vic 3001



2536800002053

ISSN 1328 2778

RRP \$23.00